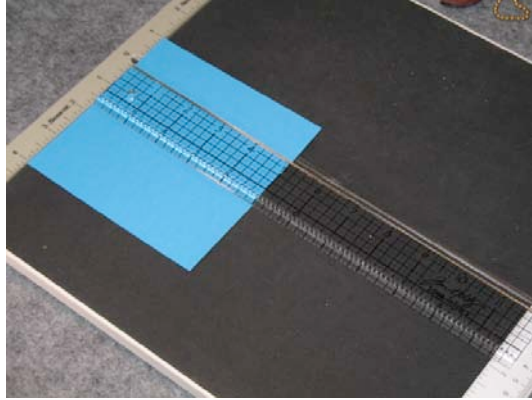
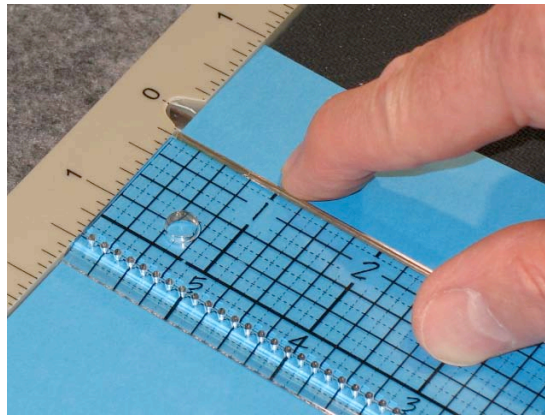


Scor-it Tutorial... Making embossed frames inside the edges of the paper.

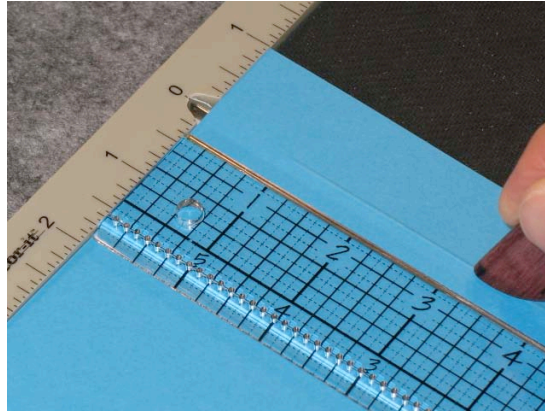
This process will take a little patience and practice. You'll need a clear measuring ruler with inch markings - we're using the Tim Holtz Design Ruler for our example.



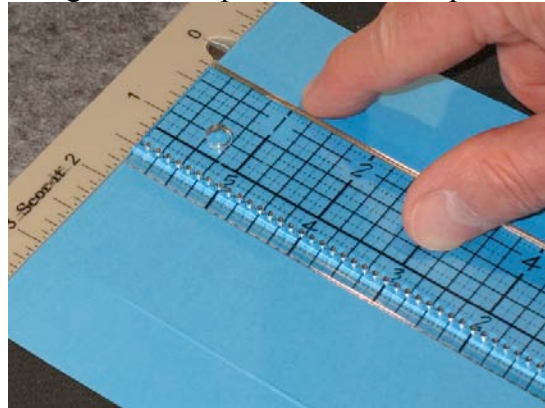
- your embossed frame can be any size. In our example we have chosen a 5.5" x 5.5" piece of card stock and will make a 1" embossed frame inside the papers edge.
- position your paper at 1" and lay the clear ruler just to the left or right, depending on which handed you are. Next, push down on the scoring rule with your index finger opposite the 1" mark on the clear ruler – this will produce a slight ridge and a starting point for the first embossed line.



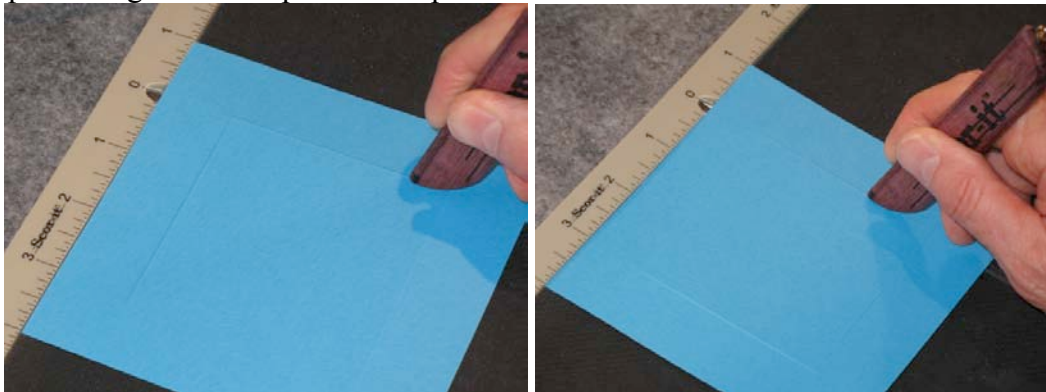
- now start your embossed line at the 1" mark and end at the 4" mark (remember we're creating a 1" frame inside of a 5.5" x 5.5" square).



- now turn the paper 180 degrees and repeat the above step.



- next, turn the paper 90 degrees and connect the embossed lines on one side. Turn the paper 90 degrees and repeat to complete the frame.



- your completed frame should look like this!

